

spectra<sup>®</sup>  
collection



# Curved-Edge

Contemporary laminate surfaces

STONE SPARK  
(QUARTZ)





# Kitchen living room





# Beautifully tough Work surfaces

[spectraworks-surfaces.co.uk](http://spectraworks-surfaces.co.uk)

---

Few work surfaces are as versatile as those in a kitchen or utility room.

They need to be hard wearing, yet easy on the eye; able to accommodate hobs and drainers on top, while enabling ovens, dishwashers and other appliances to work uninterrupted below.

It's why all Spectra Curved-Edge surfaces are made of hygienic, durable waterproofed materials that work perfectly with everything in your kitchen and utility room.

A choice of 40 stylish décors and 10 textures is available, including dazzling quartz, dramatic dark woods and original abstract designs. Each work surface has one long edge curved to give seamless protection. And thanks to the large dimensions available, wasteful offcuts and joints are both kept to a minimum.

## Work surface dimensions

3600mm x 600mm x 40mm

1800mm x 600mm x 40mm



GREY  
LIGHTNING  
STONE  
(MATT)



CYPRESS  
CINNAMON  
(WOOD)







# Fit for purpose

## Breakfast bar and island units

[spectraworksurfaces.co.uk](http://spectraworksurfaces.co.uk)

---

Even in spacious kitchen living rooms, we're committed to helping you make the most of every inch. With the addition of a Spectra Curved-Edge breakfast bar area and island unit, you'll have more room to prepare food, share meals and simply relax in the heart of your home.

Available in the same 40 décors and 10 textures as the main work surfaces, we've also ensured wide dimensions are available to maximise the additional space available. Furthermore, to keep potentially painful knocks to a minimum, the two longest edges of the breakfast bar and island unit have a smooth curved-edge.

### Breakfast bar and island unit dimensions

3000mm x 665mm x 40mm

3000mm x 900mm x 40mm

# Style and substance

## Upstands

[spectraworksurfaces.co.uk](http://spectraworksurfaces.co.uk)

---

When updating your kitchen or utility room, it's only natural you want it to look its best for years to come. That's where our upstands can make a huge difference without making a great dent in your budget. Easy to clean and quick to install, they provide a sophisticated and hygienic barrier between your walls and work surfaces.

Featuring a curved top edge, our upstands are available in the same 40 décors and 10 textures as the main work surface range and ensure a seamless continuation between surface and wall.

They're also easily removed and replaced should you wish to refresh the look of your kitchen in the future.

### Upstand dimensions

3000mm x 100mm x 18mm

SNOW  
SPARK  
(QUARTZ)



CARRERA  
MARBLE  
(MATT)



## The clear alternative **MAZAN**<sup>®</sup>

If you're looking to add a contrasting splashback or feature wall in your kitchen, bathroom or utility room, check out the Mazan<sup>®</sup> range of dazzlingly beautiful and affordable acrylic glass panels. Visit [mazan-glass.co.uk](http://mazan-glass.co.uk) for details.



MAZAN LIGHT FAWN (SOLID COLOUR)

# Practical magic

## Splashbacks

[spectraworks-surfaces.co.uk](http://spectraworks-surfaces.co.uk)

---

Highly cost-effective, quick to clean and easy to install, splashbacks are an increasingly popular alternative to tiles. They can also prolong the life of your work surfaces and walls by protecting them against water and impact. A win-win in anyone's books.

As you'd expect, splashbacks match perfectly to every Spectra Curved-Edge work surface and breakfast bar as they share the same 40 décors and 10 textures.

### Splashback dimensions

3000mm x 1200mm x 8mm

# Tried and trusted

## Award-winning quality

[spectraworksurfaces.co.uk](http://spectraworksurfaces.co.uk)

---

All Spectra Curved-Edge products undergo a number of tests to ensure each work surface, upstand and splashback not only provides remarkable strength and style, but delivers superior performance against heat, water, abrasion and impact resistance\*.



When it comes to checking quality, we're also unapologetically exacting. It's why you'll never see us cutting curved corners or taking the easy option.

Instead you'll find us carrying out test after test to ensure all our surfaces are of the highest standard. It's an approach that has led to Spectra Curved-Edge achieving the ultimate mark of quality – the FIRA Gold Award.

\* Whilst Spectra Curved-Edge offers additional performance over other work surfaces, standard work surface precautions such as heat protectors and chopping boards should still be used.



# Designed for the future

## Sustainability

---

Naturally, all the timber used in the production of Spectra Curved-Edge work surfaces, breakfast bars, upstands and splashbacks comes from well-managed and sustainable forests.

These are certified in accordance with the rules of the Forest Stewardship Council® and the Program for the Endorsement of Forest Certification. What's more, thanks to our impressively realistic wood grain effects and textures it's unnecessary to cut down exotic species of timber within precious forests, or disrupt the earth by mining for granite and marble.





STONE SPARK  
(QUARTZ)

Hobs can be installed  
into the work surface

Spectra Curved  
Edge work surfaces

Sinks, taps and  
drainers can be  
installed into  
the work surface

A built-in oven can  
be installed under  
the work surface

Add some heavy-duty glitz and long-lasting  
glamour to your kitchen with Spectra Curved-Edge.





Create a stylish barrier with matching upstands

Expand the kitchen with matching breakfast bar and island unit

Create a seamless look with matching splashbacks

Washing machine can be installed under the work surface



AUTUMN  
GRANITE  
(GLAZE)

It's one thing to look the part, quite another to feel the part too. Our designers insist on both. It's why we apply distinctive textures across our high performance laminate surfaces to create a much greater sense of realism.



# A touch of class

## Authentic textures

spectraworks-surfaces.co.uk

---

What will it be?  
Warm to the touch or refreshingly cool?  
Naturally weathered or luxuriously smooth?

There's no right or wrong answer of course, it all comes down to personal choice.

With this in mind, we've created a wealth of texture options for you to choose from that perfectly complement our range of distinctive décors.

### **Quartz†**

A gloss surface with multi-coloured metallic elements freely distributed within the décor to give a dazzlingly unique finish.

### **Gloss†**

This ever-popular, highly reflective and luxurious finish brings added glamour to your surface of choice.

### **Matt**

Used with some of our stone and wood décors, this delicate texture provides a distinctly natural look and feel.

### **Satin**

This hard wearing finish provides a semi-polished sheen that enhances the colour of the décor.

### **Stone**

Easy to clean and maintain, the non-reflective and subtle unevenness mirrors freshly quarried natural stone.

### **Wood**

Subtly and ingeniously replicates the natural grain of real wood.

### **Nature**

This texture provides a subtle satin feel, evoking the raw sensation of granite.

### **Glaze**

A stunning effect that combines subtle surface ripples with gloss and matt.

### **Sirius**

Scratch resistant and hard wearing, this texture is ideal for highly used work surfaces.

### **Mika**

This highly tactile finish creates the touch sensation of naturally weathered slate.

† **Please Note:** Quartz and Gloss surfaces are more susceptible to scratches than other work surface finishes, so additional care must be taken when handling and cleaning.

NATURAL  
OAK  
(WOOD)

Swatch sample scale is 1:2  
Please also take a look at the sample book for larger décor images.

# Setting the tone

## Décor options

[spectraworksfaces.co.uk](http://spectraworksfaces.co.uk)



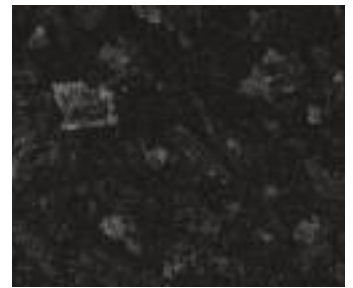
**Andromeda Black** | Quartz



**Black Spark** | Quartz



**Black Slate** | Gloss



**Black Slate** | Satin



**Black Sirius** | Sirius



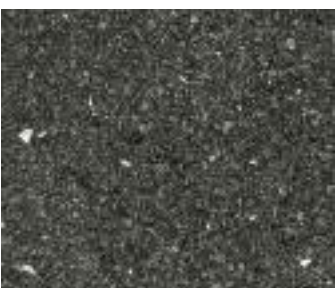
**Taurus Black** | Satin



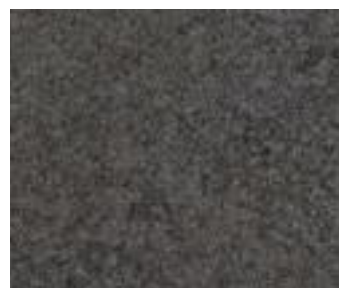
**Lunar Night** | Glaze



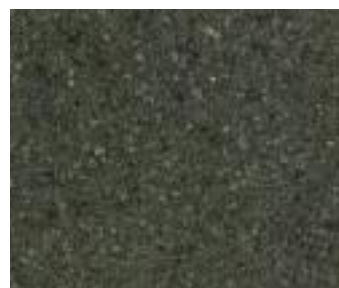
**Stone Spark** | Quartz



**Andromeda Smoke** | Quartz



**Celtic Granite** | Glaze



**Anthracite Artstone** | Glaze



**Lava Sand** | Matt



**New Grey Slate** | Mika



**Grey Shuttered Concrete** | Stone



**Natural Limestone** | Stone



**Grey Lightning Stone** | Matt



**Grey Peppered Spark** | Quartz



**Andromeda Storm** | Quartz



**Corinthian Marble** | Matt



**Italian Granite** | Glaze



**Dolce Vita** | Nature



**Autumn Granite** | Glaze



**Taurus Beige** | Matt



**Sand Spark** | Quartz



**White Sirius** | Sirius



**Light Cream Delight** | Nature



**Andromeda Cloud** | Quartz



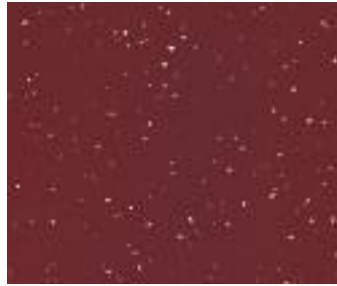
**Snow Spark** | Quartz



**Andromeda White** | Quartz



**Carrera Marble** | Matt



**Andromeda Burgundy** | Quartz



**Weathered Stavewood** | Wood



**Natural Elm** | Matt



**Walnut Butcher Block** | Matt



**Colmar Oak** | Wood



**Blocked Oak** | Matt



**Cypress Cinnamon** | Wood



**Walnut** | Matt



**Natural Oak** | Wood



**Shorewood** | Wood

# Finish in style

## Product availability

spectraworksurfaces.co.uk

DÉCOR NAME	TEXTURE	PRICE BAND	WORK SURFACES				UPSTANDS	SPLASHBACKS
			3600 x 600 x 40mm	1800 x 600 x 40mm	3000 x 665 x 40mm	3000 x 900 x 40mm	3000 x 100 x 18mm	3000 x 1200 x 8mm
Andromeda Black	Quartz	C	■		■	■	■	■
Andromeda Burgundy	Quartz	C	■		■	■	■	■
Andromeda Cloud	Quartz	C	■		■	■	■	■
Andromeda Smoke	Quartz	C	■		■	■	■	■
Andromeda Storm	Quartz	C	■		■	■	■	■
Andromeda White	Quartz	C	■		■	■	■	■
Anthracite Artstone	Glaze	C	■	■	■	■	■	■
Autumn Granite	Glaze	C	■	■	■	■	■	■
Black Sirius	Sirius	C	■	■	■	■	■	■
Black Slate	Gloss	B	■		■	■	■	■
Black Slate	Satin	A	■	■	■	■	■	■
Black Spark	Quartz	C	■		■	■	■	■
Blocked Oak	Matt	A	■	■	■	■	■	■
Carrera Marble	Matt	A	■	■	■	■	■	■
Celtic Granite	Glaze	C	■	■	■	■	■	■
Colmar Oak	Wood	A	■	■	■	■	■	■
Corinthian Marble	Matt	A	■	■	■	■	■	■
Cypress Cinnamon	Wood	A	■	■	■	■	■	■
Dolce Vita	Nature	B	■	■	■	■	■	■
Grey Lightning Stone	Matt	A	■	■	■	■	■	■
Grey Peppered Spark	Quartz	C	■		■	■	■	■
Grey Shuttered Concrete	Stone	A	■	■	■	■	■	■
Italian Granite	Glaze	C	■	■	■	■	■	■
Lava Sand	Matt	A	■	■	■	■	■	■
Light Cream Delight	Nature	B	■	■	■	■	■	■
Lunar Night	Glaze	C	■	■	■	■	■	■
Natural Elm	Matt	A	■	■	■	■	■	■
Natural Limestone	Stone	A	■	■	■	■	■	■
Natural Oak	Wood	A	■	■	■	■	■	■
New Grey Slate	Mika	C	■	■	■	■	■	■
Sand Spark	Quartz	C	■		■	■	■	■
Shorewood	Wood	A	■	■	■	■	■	■
Snow Spark	Quartz	C	■		■	■	■	■
Stone Spark	Quartz	C	■		■	■	■	■
Taurus Beige	Matt	A	■	■	■	■	■	■
Taurus Black	Satin	A	■	■	■	■	■	■
Walnut	Matt	A	■	■	■	■	■	■
Walnut Butcher Block	Matt	A	■	■	■	■	■	■
Weathered Stave Wood	Wood	A	■	■	■	■	■	■
White Sirius	Sirius	C	■	■	■	■	■	■

Please Note: We have price bands A, B and C, where A is the lowest price and C is the highest price. This is due to different levels of décor and texture sophistication.



[spectraworksurfaces.co.uk](http://spectraworksurfaces.co.uk)

For sales and technical information please call 0121 561 4245  
or contact your local Spectra laminate work surface retailer.

**spectra**   
collection

**Curved-Edge**  
Contemporary laminate surfaces

Whilst every effort has been made to accurately represent the Spectra colours and textures, we are unable to guarantee an exact match due to the limitations of the brochure printing process. E&OE. We reserve the right to amend specifications of products without notice. All dimensions are nominal.

  
Made in Britain